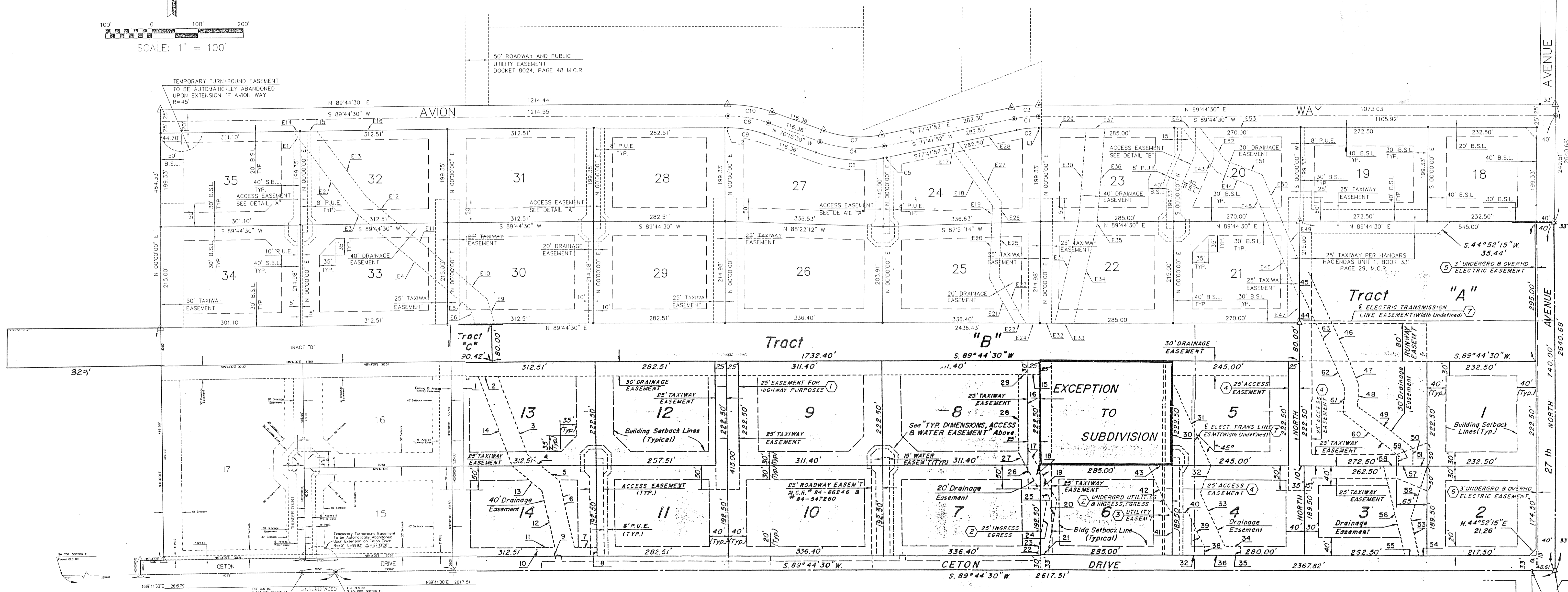


FND. B.C. IN CONC.
E 1/4 COR. SEC. 11
T.1S., R.2E.



HANGAR HACIENDAS

FINAL PLAT COMPOSITE EXHIBIT

- UNIT 1 — LOTS 1-14, TRACTS A, B & C, EXCEPTION
 - UNIT 2 — LOTS 15-17, TRACT D
 - UNIT 3 — LOTS 18-35
- WEST OVER-RUN

RICK ENGINEERING COMPANY

San Diego Riverside Orange Phoenix Tucson
 6150 North 16th St. • Phoenix, AZ 85016-1705 • (602) 957-3350 • FAX (602) 285-2396 • www.rickeng.com

HANGAR HACIENDAS			
FINAL PLAT COMPOSITE EXHIBIT			
DESIGNED: SAJ	DATE: FEB. 2002	PROJECT NO. 2060	SHEET 1 OF 1
DRAWN: PV			
CHECKED: SAJ			