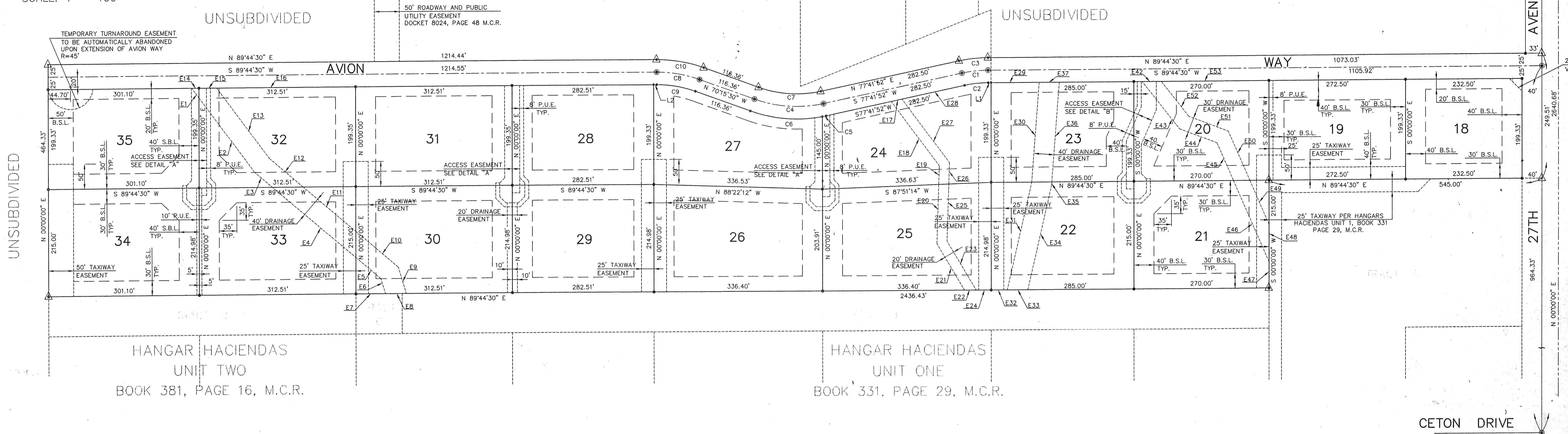


FND. B.C. IN CONC.  
E 1/4 COR. SEC. 11  
T.1S., R.2E.



LINE TABLE

LINE	DIRECTION	DISTANCE
E1	N 36°35'13" W	23.95'
E2	S 36°35'13" E	186.23'
E3	S 49°37'27" E	46.07'
E4	N 49°37'27" W	218.44'
E5	N 49°37'27" W	65.63'
E6	S 16°43'14" E	31.28'
E7	S 89°44'30" W	59.00'
E8	S 89°44'30" W	41.71'
E9	S 16°43'14" E	54.91'
E10	N 49°37'27" W	111.46'
E11	S 49°37'27" E	137.82'
E12	S 49°37'27" E	88.11'
E13	N 36°35'13" W	176.20'
E14	N 89°44'30" E	14.28'
E15	S 89°44'30" W	35.37'
E16	N 89°44'30" E	872.16'
E17	N 77°41'52" E	21.95'
E18	N 36°36'56" W	160.64'
E19	N 01°49'26" E	37.23'
E20	S 01°49'26" W	118.74'
E21	N 30°41'08" W	107.74'
E22	N 89°44'30" E	23.19'
E23	S 30°41'08" E	113.65'
E24	N 89°44'30" E	30.00'
E25	N 01°49'26" E	114.29'
E26	N 01°49'26" E	42.81'
E27	N 36°36'56" W	158.58'
E28	S 77°41'52" W	127.79'
E29	N 89°44'30" E	96.00'
E30	N 04°19'06" E	199.97'
E31	S 12°48'42" W	220.72'
E32	S 89°44'30" W	32.00'
E33	S 89°44'30" W	41.06'
E34	S 12°48'42" W	214.40'
E35	S 04°19'06" W	6.17'
E36	N 04°19'06" E	199.97'
E37	S 89°44'30" W	40.13'

LINE	DIRECTION	DISTANCE
E42	N 89°44'30" E	38.07'
E43	N 38°15'21" W	120.57'
E44	S 69°11'16" E	79.76'
E45	S 23°33'57" E	82.37'
E46	S 23°33'57" E	177.43'
E47	N 00°00'00" E	52.05'
E48	S 00°00'00" W	75.04'
E49	S 23°33'57" E	95.72'
E50	S 23°33'57" E	107.91'
E51	N 69°11'16" W	84.07'
E52	N 38°15'21" W	88.83'
E53	S 89°44'30" W	215.00'
L1	S 89°44'30" W	5.81'
L2	N 89°44'30" E	6.03'

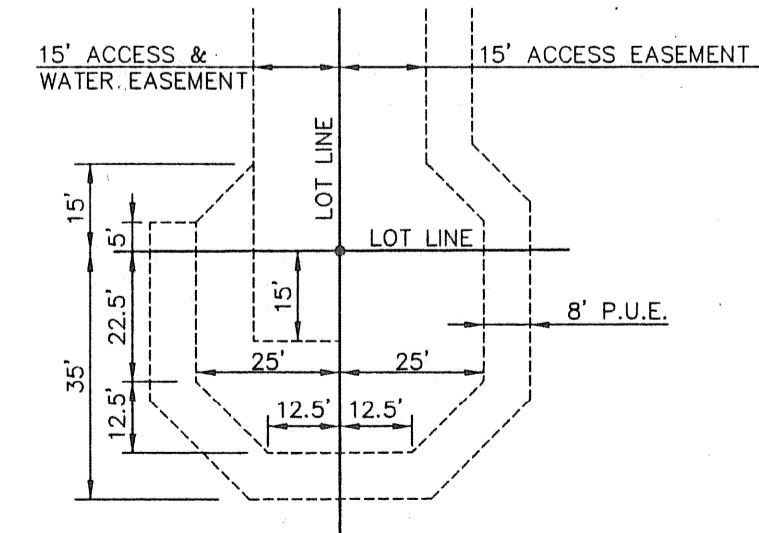
LOT DATA TABLE:

LOT NO.	LOT WIDTH (FT.)	LOT AREA (SQ. FT.)
18	199.33	46,344
19	272.50	54,317
20	199.33	53,819
21	215.00	58,049
22	215.00	61,274
23	199.33	56,808
* 24	145.00	58,845
* 25	203.91	70,460
* 26	203.91	70,460
* 27	145.00	55,437
28	199.35	56,312
29	214.98	60,739
30	214.98	67,189
31	199.35	62,292
32	199.35	62,292
33	214.98	67,189
34	214.98	64,736
35	199.35	60,018

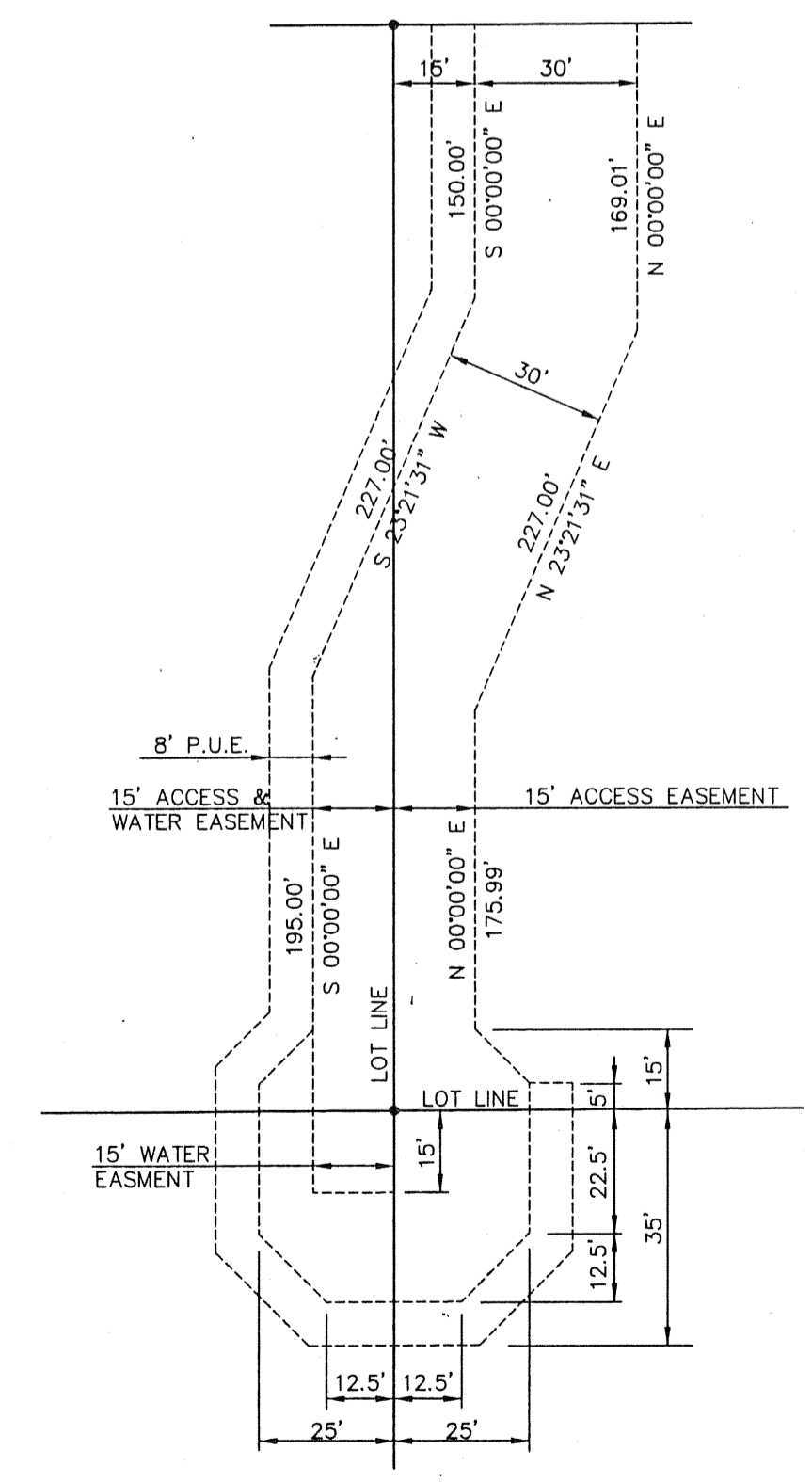
\* LOT WIDTH AND AREA HAVE CHANGED FROM APPROVED PRELIMINARY PLAT

CURVE TABLE

CURVE	RADIUS	LENGTH	TANGENT	DELTA
C1	250.00'	52.55'	26.37'	12°02'38"
C2	225.00'	47.30'	23.74'	12°02'38"
C3	275.00'	57.81'	29.01'	12°02'38"
C4	250.00'	139.82'	71.79'	32°02'38"
C5	275.00'	7.81'	3.91'	01°37'38"
C6	275.00'	145.99'	74.76'	30°24'59"
C7	225.00'	125.84'	64.61'	32°02'38"
C8	250.00'	87.27'	44.08'	20°00'00"
C9	225.00'	78.54'	39.67'	20°00'00"
C10	275.00'	95.99'	48.49'	20°00'00"



DETAIL "A"  
TYPICAL ACCESS, P.U.E. & WATERLINE EASEMENT



DETAIL "B"  
ACCESS, P.U.E. & WATERLINE EASEMENT

DRAWN BY: DRS DATE: 9/14/96  
CHECKED BY: RWS DRAWING NO.: HH-FP1  
JOB NO.: 95-0166 SHEET 1 OF 1

MARICOPA COUNTY CASE NO. #S86-48

FINAL PLAT  
HANGAR HACIENDAS - UNIT THREE

STADLER CONSULTING ENGINEERS  
2106 N. 24TH STREET, SUITE H  
PHOENIX, ARIZONA 85008  
(602) 225-2414

DWN. DRS CKD. RWS DATE 9/3/96 JUN 95-0166 SHT 2 OF 2

REVISIONS:  
REV. PER MARICOPA  
PARZ REVIEW COMMENTS  
10/2/97 RWS

